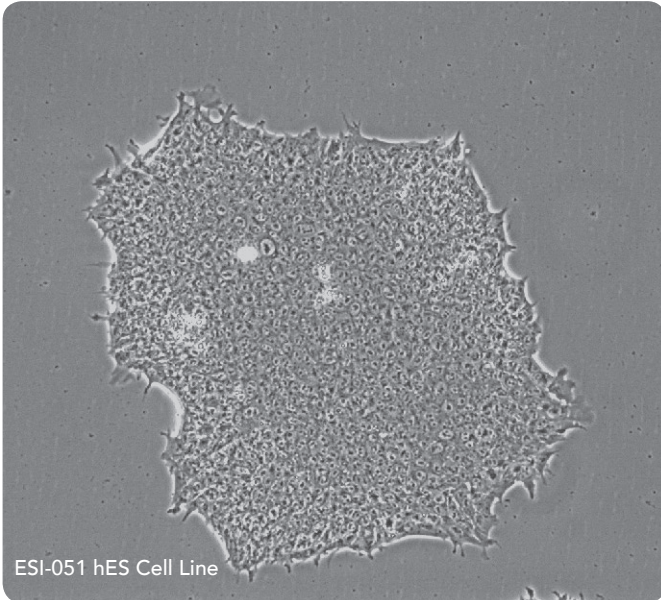


ES Cell International

Human Embryonic Stem Cell Lines



- Complete genomic sequence and comprehensive profile data available
- Listed on NIH Stem Cell Registry and approved for US federal funding
- Available under CIRM Partnership

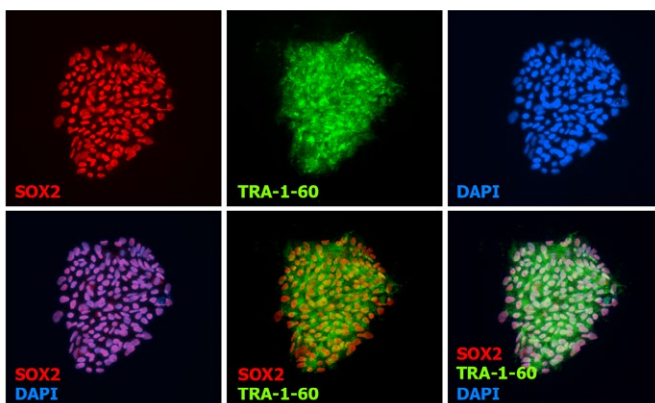


Figure 1. Expression of the pluripotency markers, Sox2 (red) and TRA-1-60 (green) of an ESI-017 colony, shown here cultured under defined, feeder-free conditions. Nuclei marked by DAPI staining (blue).

ESI human embryonic stem cell (hESC) lines were derived under current Good Manufacturing Practices (cGMP). Matched cell lines are available in both research-grade and clinical-grade cell formats. As the first clinical-grade hES cell lines, they are among the best-characterized and documented cell lines available today, with complete genome sequence, STR-fingerprint and karyotype data available.

Manufactured in compliance with quality systems

ESI cell lines are backed with donor history and testing information in best compliance with current Good Tissue Practice (cGTP) and conform to Global Ethical Standards and Clinical Cell Regulations.

REFERENCES

- Crook, J.M., et al. (2007) The generation of six clinical-grade human embryonic stem cell lines. *Cell Stem Cell* 1(5): 490-494.
- Funk, W.D., et al. (2012) Evaluating the genomic and sequence integrity of human ES cell lines; comparison to normal genomes. *Stem Cell Res* 8(2): 154-164.

ORDER INFORMATION

DESCRIPTION	CAT. NO.
ESI-017 Human Embryonic Stem Cell Line	ES-700
ESI-035 Human Embryonic Stem Cell Line	ES-701
ESI-049 Human Embryonic Stem Cell Line	ES-702
ESI-051 Human Embryonic Stem Cell Line	ES-703
ESI-053 Human Embryonic Stem Cell Line	ES-704
Human Embryonic Stem Cell Bundle	ES-706

For the latest information please visit esibio.com.

t **877.636.4978**
e **orders@esibio.com**