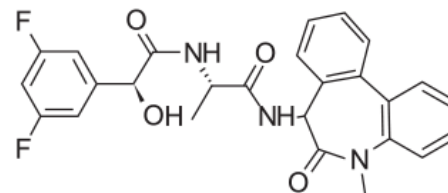


# LY411575

Catalog Number: ST10035



Size	5 mg
Description	LY411575 is a selective $\gamma$ -secretase inhibitor which indirectly suppresses Notch activation. It has been shown to promote goblet cell differentiation in mouse intestine. LY411575 is known to support neural differentiation of mouse ES cells. It has also been used to inhibit cell proliferation in primary and immortalized Kaposi's sarcoma cells.
Molecular Weight	479.48
Molecular Formula	C <sub>26</sub> H <sub>23</sub> F <sub>2</sub> N <sub>3</sub> O <sub>4</sub>
Chemical Name	(2S)-2-[[[(2S)-2-(3,5-difluorophenyl)-2-hydroxyacetyl]amino]-N-[(7S)-5-methyl-6-oxo-7H-benzo[d][1]benzazepin-7-yl]propanamide
CAS Number	209984-57-6
PubChem Identifier	10435235
Appearance	White solid
Purity	>99% by HPLC analysis
Solubility	Soluble in DMSO at 100 mM and ethanol at 100 mM
Reconstitution	For a 10 mM concentrated stock solution, reconstitute the compound by adding 1.04 mL of DMSO to the entire contents of vial. If precipitate is observed, warm the solution to 37°C for 2 to 5 minutes.
Recommended Usage	For use in cell culture, warm medium just prior to adding the reconstituted compound. Once the compound is added, mix and filter-sterilize the medium using a 0.2 $\mu$ M low-protein binding filter. Note: for most cells, the maximum tolerance to DMSO is less than 0.5%.
Storage and Stability	Solid: Shipped at room temperature. Store at -20°C. Stable for 6 months when stored as directed. Solution: Following reconstitution, store aliquots in tightly sealed vials at -20°C. Avoid repeated freeze-thaw cycles.
References	<p>Abranches, E., et al. (2009) Neural differentiation of embryonic stem cells in vitro: a road map to neurogenesis in the embryo. <i>PLoS One</i> 4(7): e6286. PMID: 19621087.</p> <p>Curry, C.L., et al. (2005) Gamma secretase inhibitor blocks Notch activation and induces apoptosis in Kaposi's sarcoma tumor cells. <i>Oncogene</i> 24(42): 6333-6344. PMID: 15940249.</p> <p>McKee, T.D., et al. (2013) An improved cell-based method for determining the <math>\gamma</math>-secretase enzyme activity against both Notch and APP substrates. <i>J Neurosci Methods</i> 213(1): 14-21. PMID: 23219895.</p> <p>Wong, G.T., et al. (2004) Chronic treatment with the gamma-secretase inhibitor LY-411,575 inhibits beta-amyloid peptide production and alters lymphopoiesis and intestinal cell differentiation. <i>J Biol Chem</i> 279(13): 12876-12882. PMID: 14709552.</p>

## PRODUCT WARRANTY

BioTime, Inc. and/or its subsidiaries warrants its products as set forth in the General Terms and Conditions of Sale found on ESI BIO's website at [www.esibio.com/termsandconditions](http://www.esibio.com/termsandconditions). ©2014 BioTime, Inc. All rights reserved. ESI BIO, ESI BIO logo and all other trademarks mentioned herein are the property of BioTime, Inc. and/or its subsidiaries or their respective owners. For support visit [www.esibio.com/support](http://www.esibio.com/support) or email [techsupport@esibio.com](mailto:techsupport@esibio.com)