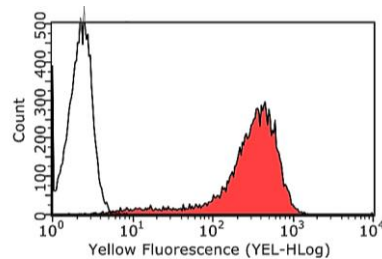


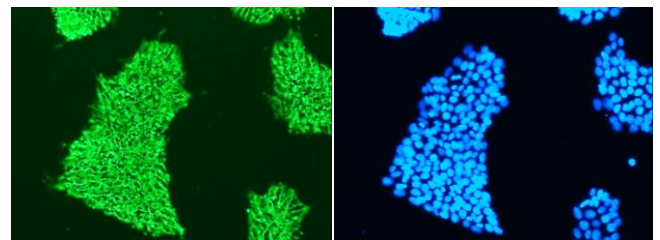
# SSEA-4 anti-Human Antibody

Catalog Number: ST11015

Size	100 µL	
Concentration	0.5 mg/mL	
Species Reactivity	Human	
Host	Mouse Monoclonal	
Clone	MC-831-70	
Isotype	IgG3	
Immunogen	Human embryonal carcinoma cell line 2102Ep	
Formulation	Aqueous buffer, 0.09% sodium azide.	
Storage and Stability	Store at 2-8°C. Stable for 6 months from date of receipt when stored as directed.	
Applications Tested	Flow Cytometry (FC), Immunocytochemistry/Immunofluorescence (ICC/IF)	
Recommended Dilutions	Flow Cytometry	1:100
	Immunocytochemistry/Immunofluorescence	1:100
	It is recommended that the antibody be titrated for optimal performance for each application.	



FC analysis on H1 human ES cells at a 1:100 dilution. Red histogram represents SSEA-4 Antibody and open histogram represents isotype control. A PE-conjugated anti-Mouse IgG was used as the secondary antibody.



ICC analysis on H1 human ES cells. Cells were stained with SSEA-4 Antibody at a 1:100 dilution followed by an Alexa 488-conjugated secondary antibody (green). Nuclei were counterstained with DAPI (blue).

Description	This antibody reacts with the stage-specific embryonic antigen-4 (SSEA-4), a glycolipid carbohydrate epitope that is expressed upon the surface of human teratocarcinoma stem (EC), embryonic germ (EG), embryonic stem (ES), and induced pluripotent stem (iPS) cells. No immunoreactivity is evident with undifferentiated murine EC, ES/iPS and EG cells. Expression of SSEA-4 is down regulated following differentiation of human EC cells. In contrast, the differentiation of murine EC and ES/iPS cells may be accompanied by an increase in SSEA-4 expression.
Alternative Names	Stage-specific embryonic antigen 4
References	<p>Battula, V.L., et al. (2007) Human placenta and bone marrow derived MSC cultured in serum-free, b-FGF-containing medium express cell surface frizzled-9 and SSEA-4 and give rise to multilineage differentiation. <i>Differentiation</i> 75: 279-291. PMID: 17288545</p> <p>Kannagi, R., et al. (1983) Stage-specific embryonic antigens (SSEA-3 and -4) are epitopes of a unique globo-series ganglioside isolated from human teratocarcinoma cells. <i>EMBO J</i> 2: 2355-2361. PMID: 6141938</p>

## PRODUCT WARRANTY

BioTime, Inc. and/or its subsidiaries warrants its products as set forth in the General Terms and Conditions of Sale found on ESI BIO's website at [www.esibio.com/termsandconditions](http://www.esibio.com/termsandconditions).

©2014 BioTime, Inc. All rights reserved. ESI BIO, ESI BIO logo and all other trademarks mentioned herein are the property of BioTime, Inc. and/or its subsidiaries or their respective owners.

For support visit [www.esibio.com/support](http://www.esibio.com/support) or email [techsupport@esibio.com](mailto:techsupport@esibio.com)